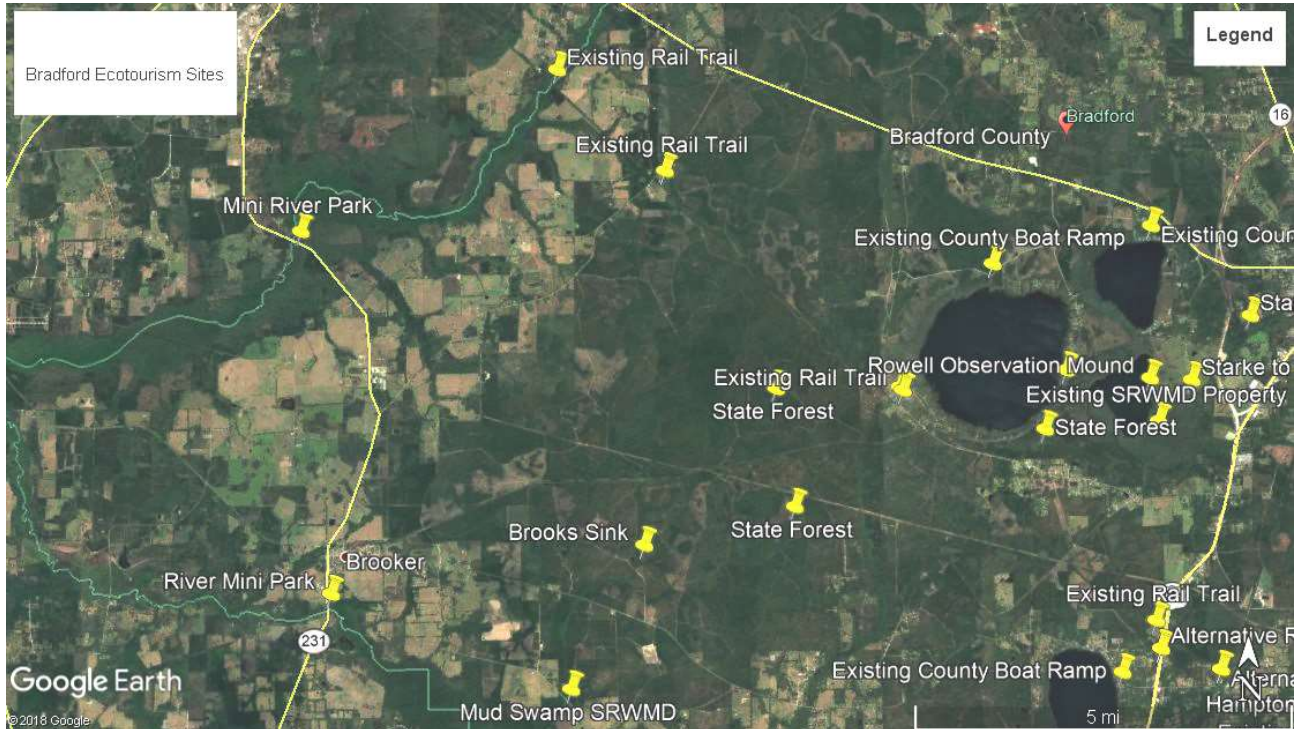


Bradford County Ecotourism Sites

Bradford Environmental Forum

Paul Still

904 368-0291 stillpe@aol.com



River Mini Park at SR 231 Santa Fe River Bridge, currently used for fishing.
Improve access for use as a canoe/kayak launch site

Mini River Park at SR 231 New River Bridge, currently used for fishing.
Improve access for use as a canoe/kayak launch site.

Mud Swamp 837 acre SRWMD property. Public access through gate with combination lock.
Improved parking and trails could make it destination site

Brooks Sink large sinkhole between Graham and Brooker.
Currently owned by Rayonier.
Would make a great State Geological Park like Devil's Millhopper in Gainesville.

State Forest from 2000 to 3000 acres of Rayonier land
Adding public access roads and trails could make it a destination site.
A State Forest could also be managed for flood reduction and aquifer recharge.

Rail Trail from Sampson to New River best part of the trail in Bradford County.



State DOC lands could be developed as destination sites.

Potential Park and Storm Water Management

A small Rayonier property could be used for a roadside part, stormwater management to reduce flooding in Lawtey and enhance aquifer recharge.

SRWMD property at the loop in CR 225 could be site of a large lake for flood mitigation, aquifer recharge and public use.



Hampton Lake Boat ramp has parking limitations.
 Hampton Lake and the boat ramp should be on a list of Bradford ecotourism sites.

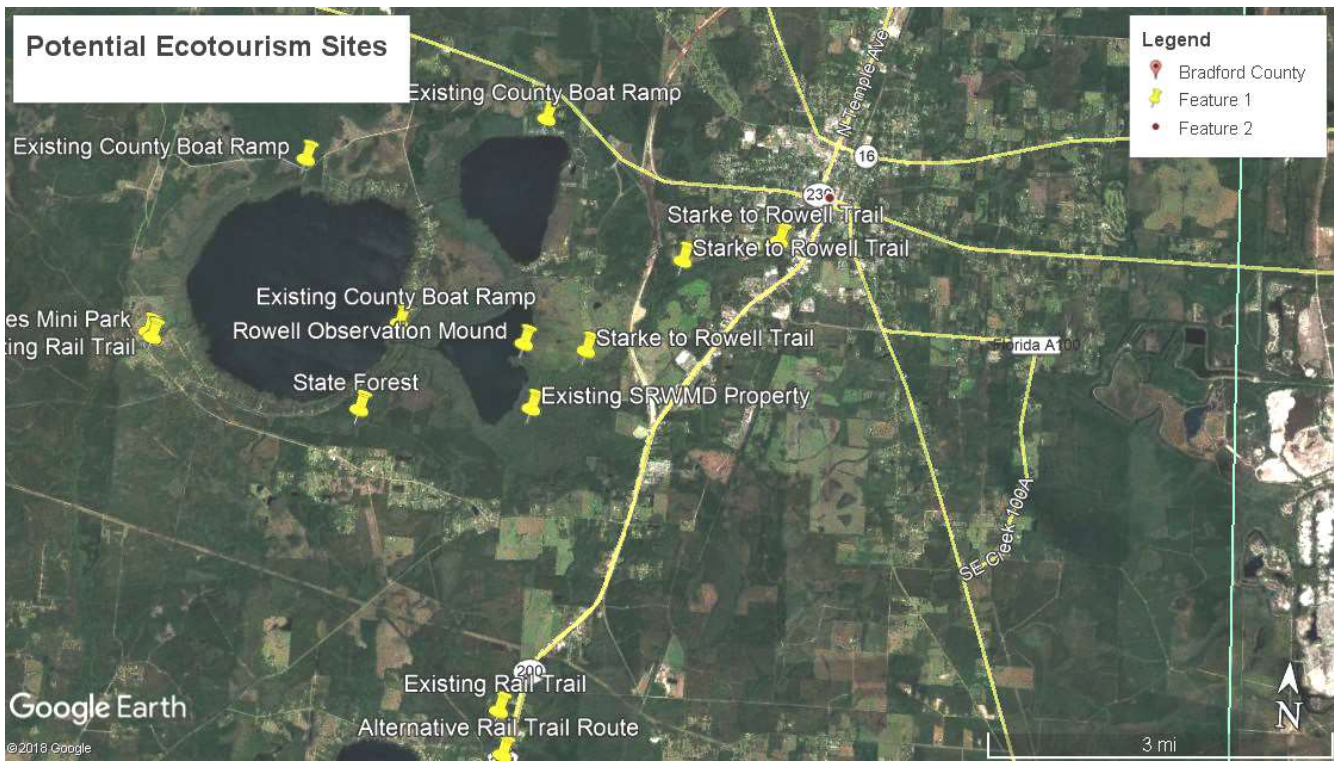
Alternative Rail Trail Route

Crossing 301 is likely to be a major issue with the rail trail. Creating an alternative route may be the cost effective solution. Sidewalks could be installed from Hampton across 301 at the stop light at 301 and CR 18 and then run along 301 to where the rail trail exists. This also solves a problem of the rail trail in Hampton at the CSX rail line.



County Boat Ram on Little Santa Fe Lake could be upgraded and trails developed in the existing State lands to the south of the boat ramp.

The benefits of a 10 to 15 acre park across from the boating ramp needs to be reevaluated.



Mini Park at 3 pipes in Sampson City.

3 pipes is a popular fishing spot. This location could be turned into a mini park and canoe and kayak launch site by working with DEP's Rail Trail program

Cypress Run County boat ramp on the north side of Lake Sampson needs attention. BCC has a contract with a grant writer to apply for funds for improvements. That step may have been premature because of uncertainty about Lake Sampson levels.

The boat ramp on Lake Crosby has parking issues.

The boat ramp on the east side of Lake Sampson has been improved. There is potential to add trails to the site and to the SRWMD property to the east and across the CSX rail line. The SRWMD property trail goes Lake Rowell and is currently used by people who fish from the bank.

Trail from Edwards Road Park to Lake Rowell.

Lake Rowell is a great birding site and could be a birding destination,

Observation Mound at Lake Rowell

Lake Rowell needs to be dredged to restore the lake and create stormwater holding capacity. The dredged materials could be used to create an observation mound at the end of the Starke to Rowell trail. Lake Rowell could be a birding site and the Observation Mound would add to the birding experience.

Adding Rayonier property to existing SRWMD property to the SW of Lake Rowell and south of the CSX rail line would allow a trail to connect the Rail Trail to Starke via a new trail along alligator Creek to Lake Rowell and then around the southern side of Lake Rowell to near Sampson City.